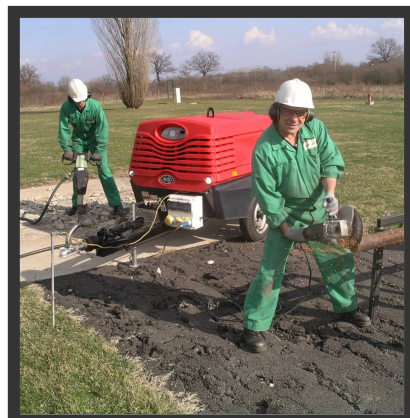


S38 G

Portable compressor 2m³/71 cfm – 7 bar /100 psi & Generator 5.5 kW

Innovative

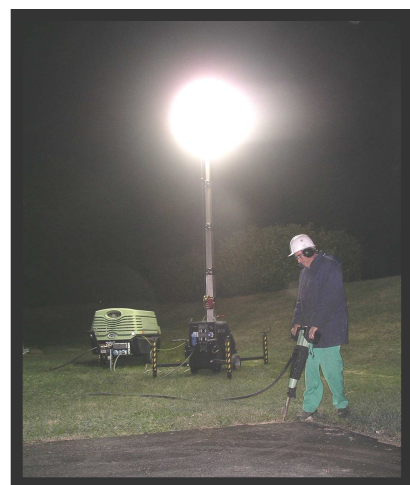


Light

Safe

Compact

Simultaneous use



NEW
PRODUCT

BODY

Fuel tank capacity, liters	30
Air outlet	2 x 1/2"
Total weight, wet (2) kg	580 - 597 - 595
Maximum Axle weight (2) kg	650 - 650 - 650
Total length (2) m	2,843 - 3,001 - 3,127
Total width (2) m	1,217 - 1,217 - 1,217
Height (2) m	1,22 - 1,22 - 1,22

GENERATOR

Rated power kW	5.5
Rated power with simultaneous use of the compressor	1.84
Frequency	50Hz
Voltage	115V or 230 V
Phase	1
Connection 16A	2
Connection 32A	1
Alternator protection	IP23

KUBOTA ENGINE

Number of cylinders	3
Displacement cc	1123
Rated speed, rpm	2550
Rated power HP - kW	26,1-19,5

COMPRESSOR

Delivery (1), m3/min (cfm)	2 (71)
Rated pressure, bar (psi)	7 (100)

(1) at rated pressure

According to ISO 1217 ±5%

(2) NF - F - UK

NF = unbraked, F = braked with adjustable tow bar,
UK = braked with straight towbar